



# CONTENTS

## CHAPTER 1

### About The Norinchukin Bank

In this section, we will introduce the background for this Integrated Report in the form of an overview of the Bank's history, the cooperative system with which the Bank is intertwined, and the Bank's business domains.



<b>Our History</b> .....	<b>07</b>
<b>Our Origins</b> .....	<b>09</b>
<b>Our Business Domains</b> .....	<b>13</b>

## CHAPTER 2

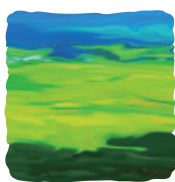
### Our Philosophy and Vision

In this section, we will introduce, through the Message from the CEO and other contents, what kind of philosophy the Bank holds, what kind of value it creates as an organization, and what its vision is.



<b>Message from the CEO</b> .....	<b>17</b>	<b>Important Issues to Achieve Our Purpose (Materiality)</b> ...	<b>29</b>
<b>Message from the CFO</b> .....	<b>23</b>	<b>Medium-Term Vision</b> .....	<b>31</b>
<b>Our Purpose, Important Issues, Vision and Shared Value</b> ...	<b>27</b>	<b>Value Creation Process</b> .....	<b>33</b>

## Corporate Logo



NORINCHUKIN

農林中央金庫

The landscape depicted in our logo represents Japan itself where agriculture, fishery and forestry are connected to all life.

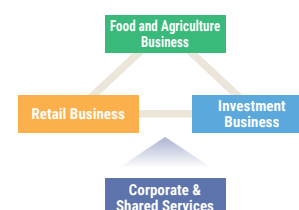
The tapestry woven from the earth, the seas and the forests portrays the breath of life and the will that carries each one of us forward, step by step.



## CHAPTER 3

### The Value We Create

In this section, we will introduce our goal sets and specific initiatives for each business areas toward the realization of our Medium-Term Vision, in the context of the Bank's Purpose.



<b>Food and Agriculture Business</b> .....	<b>37</b>	<b>Corporate &amp; Shared Services</b>	
<b>Retail Business</b> .....	<b>41</b>	<b>Initiatives to Advance Human Resource Management</b> ...	<b>59</b>
<b>Investment Business</b> .....	<b>45</b>	<b>Digital Transformation (DX)</b> .....	<b>67</b>
<b>Sustainability Management Initiatives</b> .....	<b>49</b>		

## CHAPTER 4

### Governance/Data of The Norinchukin Bank


In this section, we will introduce the message from the Supervisory Committee Member, along with descriptions of corporate governance, organizational data, and more.



<b>Message from the Supervisory Committee Member</b> ...	<b>71</b>	<b>Initiatives for Compliance</b> .....	<b>85</b>
<b>Corporate Governance</b> .....	<b>73</b>	<b>Cybersecurity</b> .....	<b>87</b>
<b>Management</b> .....	<b>78</b>	<b>Stakeholder Communication</b> .....	<b>89</b>
<b>Framework for Business Administration (Risk Appetite Framework)</b> ...	<b>83</b>	<b>Data Collection</b> .....	<b>91</b>

### Editorial Policy

- This Integrated Report is intended to help The Norinchukin Bank (the Bank) stakeholders understand the Bank's initiatives for sustainable value creation. It was prepared with reference to the International Integrated Reporting Framework issued by the IFRS Foundation.
- This document is the Bank's annual report prepared in accordance with Article 81 of the Norinchukin Bank Act. It contains information about the financial condition and performance of the Bank as of March 31, 2025 (unless otherwise stated), as well as forward-looking statements pertaining to the expectations, forecasts, prospects, business plans, targets, etc., of the Bank. These statements are based on estimates that use information the Bank had obtained at the time it prepared the report. These statements are also based on certain assumptions; these statements and assumptions may be objectively inaccurate, or may not come to fruition in the future. The Bank is not obliged to update these statements.
- In accordance with the Bank's disclosure policy, the content of this report was verified as appropriate by the Disclosure Committee, then reported to and discussed by the Supervisory Committee and the Board of Directors, which are statutory bodies under the Norinchukin Bank Act, and finally approved by the officer in charge of disclosure.

 **Read our Disclosure Policy here:**  
<https://www.nochubank.or.jp/en/dsclpolicy/>