

# Status of Capital and Shareholders

## Members and Share Ownership (As of March 31, 2023)

### Common Stocks (Including lower dividend rate stocks)

The face value of one common stock is ¥100.

Type of Organization	Number of Members	Stocks Owned
Agricultural Cooperatives	681 (134)	8,561,669,920 ( 7,526,360,000)
Federations of Agricultural Cooperatives	97 ( 32)	30,333,856,390 (27,571,600,000)
Forest Owners' Cooperatives	599 ( 0)	19,616,220 ( 0)
Forestry Production Cooperatives	10 ( 0)	14,050 ( 0)
Federations of Forest Owners' Cooperatives	46 ( 0)	22,921,100 ( 0)
Fishery Cooperatives	904 ( 6)	159,542,851 ( 99,380,000)
Fishery Production Cooperatives	17 ( 0)	21,140 ( 0)
Federations of Fishery Cooperatives	63 ( 10)	1,021,500,389 ( 697,470,000)
Marine Products Processing Cooperatives	34 ( 0)	544,400 ( 0)
Federations of Marine Products Processing Cooperatives	6 ( 0)	694,650 ( 0)
Mutual Insurance Federation of Fishery Cooperative Associations	1 ( 0)	7,064,800 ( 0)
Agricultural Mutual Relief Insurance Associations	44 ( 0)	1,338,100 ( 0)
Federations of Agricultural Mutual Relief Insurance Associations	3 ( 0)	21,000 ( 0)
Fishing Boat Insurance Association	1 ( 0)	2,454,350 ( 0)
Agricultural Credit Guarantee Fund Associations	10 ( 0)	139,650 ( 0)
Fishery Credit Guarantee Fund Associations	4 ( 0)	17,158,100 ( 0)
Fishery Mutual Relief Insurance Associations	11 ( 0)	132,000 ( 0)
Federation of Fishery Mutual Relief Insurance Associations	1 ( 0)	292,800 ( 0)
Land Improvement Districts	727 ( 0)	2,870,440 ( 0)
Federations of Land Improvement Districts	3 ( 0)	2,450 ( 0)
Medium and Small-Sized Enterprise Cooperative Associations Related to Sericulture, Forestry or Salt Production	15 ( 0)	133,500 ( 0)
Total	3,277 (182)	40,151,988,300 (35,894,810,000)

## Voting Rights of Members

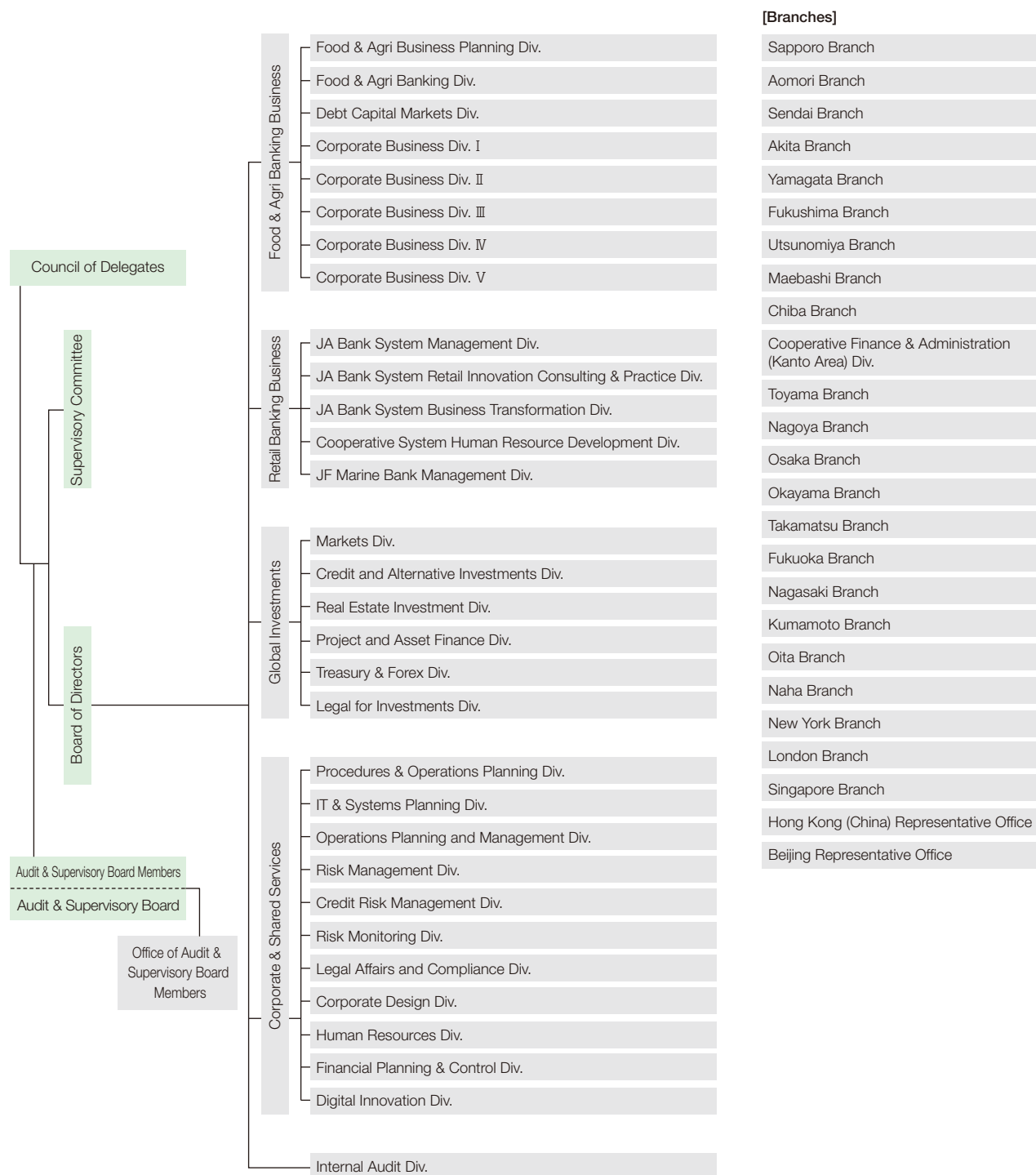
The Norinchukin Bank is the central financial institution for Japan's agricultural, fishery and forest owners' cooperative system. The supreme management decision-making organization for the Bank is basically the Council of Delegates, which consists of representative members and substitutes for the general meetings of all shareholders. Unlike stock companies, where one share represents one vote, the voting rights of the members of the Council of Delegates are equal in principle regardless of the number of investment units they own. For this reason, a list of major shareholders has not been included in this report.

## Trends in the Bank's Capital

(Millions of Yen)

Date	Increase in Capital	Capital after Increase	Method of Increase
November 30, 1983	15,000	45,000	Allotment
November 30, 1990	30,000	75,000	Allotment
November 30, 1992	25,000	100,000	Allotment
February 16, 1995	24,999	124,999	Private placement
September 25, 1997	150,000	274,999	Allotment
March 25, 1998	850,000	1,124,999	Allotment
November 29, 2002	100,000	1,224,999	Allotment
December 1, 2005	225,717	1,450,717	Allotment
March 30, 2006	14,300	1,465,017	Allotment
September 29, 2006	19,000	1,484,017	Allotment
November 26, 2007	15,900	1,499,917	Allotment
February 28, 2008	12,900	1,512,817	Allotment
March 25, 2008	503,216	2,016,033	Allotment
December 29, 2008	24,800	2,040,833	Allotment
March 30, 2009	1,380,537	3,421,370	Allotment
September 28, 2009	4,539	3,425,909	Allotment
September 29, 2015	45,551	3,471,460	Allotment
December 29, 2015	9,028	3,480,488	Allotment
March 29, 2019	559,710	4,040,198	Allotment

# Organizational Diagram (As of April 1, 2023)



# Management (As of July 1, 2023)

## Supervisory Committee

NAKAYA Toru	KUBOTA Tadashi	SATO Takafumi
SAKAMOTO Masanobu	MAEKAWA Osamu	MINAGAWA Yoshitsugu
NAKAZAKI Kazuhisa	BANDO Mariko	KUNIHURO Tadashi
HIRAMOTO Mitsuo	TANABE Masanori	OKU Kazuto
TERASHITA Saburo	KOBAYASHI Eizo	

## Directors and Officers

<b>OKU Kazuto</b> <i>Representative Director and President Chief Executive Officer</i>	<b>YUDA Hiroshi</b> <i>Director and Managing Executive Officer Member of the Board of Directors Chief Investment Officer</i>	<b>KITABAYASHI Taro</b> <i>Director and Managing Executive Officer Member of the Board of Directors Chief Financial Officer/ Co-Chief Sustainability Officer</i>
<b>YAGI Masanobu</b> <i>Representative Director and Managing Executive Officer Member of the Board of Directors Chief Operating Officer</i>	<b>NAGANO Masaki</b> <i>Managing Executive Officer Treasurer Global Head of ALM and Investor Relations</i>	<b>HAMBA Yuji</b> <i>Director and Managing Executive Officer Member of the Board of Directors Chief Information Officer</i>
<b>UMEDA Yasuhiro</b> <i>Managing Executive Officer Co-Head of Food, Agribusiness and Corporate Banking</i>	<b>AKIYOSHI Ryo</b> <i>Director and Managing Executive Officer Member of the Board of Directors Co-Head of JA and JF Business Support</i>	<b>YOSHIDA Hikaru</b> <i>Director and Managing Executive Officer Member of the Board of Directors Chief Risk Officer/ Chief Compliance Officer</i>
<b>OZAKI Taro</b> <i>Managing Executive Officer Co-Head of Food, Agribusiness and Corporate Banking</i>	<b>KAWAMOTO Shin</b> <i>Managing Executive Officer Co-Head of JA and JF Business Support</i>	<b>UTSUMI Tomoe</b> <i>Managing Executive Officer Head of Operations Chief Diversity Officer</i>
<b>IMAI Masato</b> <i>Managing Executive Officer (Based in London, UK) Head of Global Banking, Head of EMEA Co-Chief Sustainability Officer</i>	<b>KAWATA Junji</b> <i>Managing Executive Officer Co-Head of JA and JF Business Support Head of Agriculture &amp; Fisheries Banking and Regional Revitalization</i>	<b>KAWASHIMA Kenji</b> <i>Managing Executive Officer Chief Administrative Officer/ Chief Strategy Officer Chief Corporate Transformation Officer</i>

## Audit & Supervisory Board

ITO Akiko	MUROI Masahiro	SAKAI Hiroyuki
IWASO Satoshi	OGATA Masaki	

# History

## Milestones in the Bank's 100-Year History

- 1923** • The Bank is established with government funds under special legislation as the central bank for Japanese cooperatives, "Sangyo Kumiai" (December)
- 1938** • Fisheries cooperatives become members of the Bank
- 1943** • Forestry cooperatives become members of the Bank (March)
  - The Bank's name is changed to The Norinchukin Bank (September)
- 1950** • The first Norinchukin Bank debentures are issued
- 1959** • Redemption of the government's equity stake is completed, thereby making the Bank a private bank
- 1974** • Foreign exchange operations begin
- 1977** • Investment and trading in foreign currency denominated bonds begin
- 1982** • A representative office opens in New York (the Bank's first overseas foothold) (October)
- 1984** • New York Representative Office is upgraded to branch status (October)
- 1985** • A representative office opens in London (January)
- 1986** • Fiduciary services for corporate bonds begin
  - Norinchukin International plc opens in London
- 1989** • The Bank's U.S. dollar denominated notes are issued in the Euromarket
- 1990** • A representative office opens in Singapore (October)
- 1991** • London Representative Office is upgraded to branch status (April)
- 1993** • Singapore Representative Office is upgraded to branch status (April)
  - Norinchukin Securities Co., Ltd. is established (July)
  - Norinchukin Investment Trust Management Co., Ltd. is established (September)
- 1995** • Preferred stocks are issued, opening the way for capital increases through the participation of ordinary investors (February)
  - The Norinchukin Trust & Banking Co., Ltd. is established (August)
- 1996** • Acts concerning the integration of the Bank and Shinnoren are enacted (December)
- 1998** • Capital increase through issue of low dividend rate stocks (¥1 trillion) is conducted (March)
  - A representative office opens in Hong Kong (China) (July)
  - Nochu Career Services Co., Ltd. (current Nochu Business Support Co., Ltd.) is established (August)
  - A representative office opens in Beijing (November)
- 2000** • Norinchukin Zenkyoren Asset Management Co., Ltd. is established (October)
- 2001** • The Norinchukin Bank Act is revised (June)
  - Enhancement and Restructuring Act of Credit Business by the Bank and Specified Cooperatives is revised (June)
- 2002** • JA Bank System begins (January)
  - Capital increase through issue of perpetual subordinated loan notes is conducted (September)
  - Capital increase through issue of common stocks (¥100 billion) is conducted (November)
  - Consolidation of JA Shinnoren with the Bank begins
- 2003** • JF Marine Bank implements fundamental policies (January)
- 2004** • Nochu Business Support Co., Ltd. started operation (name changed from Nochu Career Services Co., Ltd.) (April)
  - Norinchukin Securities Co., Ltd. is liquidated (September)
- 2005** • Capital increase through issue of common stocks (¥225.7 billion) is conducted (December)
- 2006** • Final integration of Okayama JA Shinnoren and Nagasaki JA Shinnoren is completed (January)
  - JASTEM is made available in all prefectures (May)
  - Capital increase through issue of fixed-term subordinated bonds is conducted (September)
  - Kyodo Credit Service Co., Ltd. merges with UFJ Nicos Co., Ltd. (October)
  - Financial holding company (FHC) status is granted in the United States (December)
  - JA savings deposits top ¥80 trillion (December)
- 2007** • Final integration of Akita JA Shinnoren is completed (February)
  - JA Bank Agri-Support business is established (June)
  - Final integration of Tochigi JA Shinnoren is completed (October)
- 2008** • Final integration of Yamagata JA Shinnoren and Toyama JA Shinnoren is completed (January)
  - Capital increase through issue of lower dividend rate stocks (¥503.2 billion) and perpetual subordinated loans notes is conducted (March)
  - Final integration of Fukushima JA Shinnoren is completed (October)
- 2009** • Final integration of Kumamoto JA Shinnoren is completed (January)
  - Capital increase through issue of lower dividend rate stocks (¥1,380.5 billion) and perpetual subordinated loan notes is conducted (March)
- 2010** • Growth Base Reinforcement Fund (¥100.0 billion) is established (August)
  - Growth Base Support Fund (¥600.0 billion) is established (December)
- 2011** • Reconstruction Support Program is established (April)
  - Partial Integration of Gunma JA Shinnoren is completed (October)
- 2012** • Norinchukin Facilities Co., Ltd. becomes wholly-owned subsidiary (May)
  - Domestic emission credits (J-VER) service begins (as a broker) (June)
  - Final integration of Aomori JA Shinnoren is completed (October)
  - Global Seed Fund (¥500 billion) is established (November)
  - JA savings deposits top ¥90 trillion (December)
- 2013** • Partial integration of Chiba JA Shinnoren is completed (July)
- 2014** • Norinchukin Bank Shinagawa Training Center is completed (February)
  - Agricultural, Forestry and Fisheries Future Fund is established (March)
  - Capital increase through issue of fixed-term subordinated loans notes is conducted (March)
  - Norinchukin Value Investments Co., Ltd. is established (October)
  - Final integration of the Gunma Shinnoren is completed (October)
- 2015** • Final integration of the Chiba Shinnoren is completed (January)
- 2016** • Headquarters System is introduced (June)
  - Norinchukin Business Assist Co., Ltd. is established (December)
- 2017** • Norinchukin Australia Pty Limited is established (February)
  - JA savings deposits top ¥100 trillion (June)
  - Executive Officer System is introduced (July)
  - JA Card Co., Ltd. is established (October)
- 2018** • Capital increase through issue of low dividend rate stocks (¥559.7 billion) and perpetual subordinated loan notes is conducted (March)
  - Office is abolished (March)
- 2020** • Started to provide financial and non-financial support to address the spread of COVID-19 infections (April)
  - Norinchukin Bank Europe N.V. started operation (September)
  - Concluded a contract for a merger of inter-regional JF Shingyoren in Kyushu and that in the Eastern Japan block (October)
- 2021** • Capital and Business Alliances started among Norinchukin, JA Zen-Noh, ITOCHU and FamilyMart (March)
  - Started to strengthen the asset management business conducted by Norinchukin Zenkyoren Asset Management Co., Ltd. (March)
  - Norinchukin Capital Co., Ltd. is established (August)
  - The U.S. dollar denominated Norinchukin Bank Debentures (Green bonds) are issued (September)
  - Nochu-JAML Investment Advisors Co., Ltd. is established (September)
- 2022** • The head office has been relocated from DN Tower 21 (Yurakucho) to Otemachi One Tower (Otemachi) (from January)
- 2023** • Completed retiring all of preferred stocks (February)
  - Norinchukin Hong Kong Limited started operation (April)

## List of Group Companies

(As of March 31, 2023)

Company Name	Address	Nature of Business	Date of Establishment	Capital (Millions of Yen) Percentage of Voting Rights (%)
The Norinchukin Trust & Banking Co., Ltd.	2-1, Kandanishikichou 2-chome, Chiyoda-ku, Tokyo 101-0054, Japan	Trust & Banking	August 17, 1995	20,000 100.00
Norinchukin Australia Pty Limited	Level 29, 126 Phillip Street, Sydney, NSW2000, Australia	Project financing operations in Australia and New Zealand	February 8, 2017	A\$361 million 100.00
Norinchukin Bank Europe N.V.	Gustav Mahlerlaan 1216, 4th Floor, 1081 LA Amsterdam, The Netherlands	Commercial banking in Europe	September 21, 2018	€2,000 million 100.00
Norinchukin Research Institute Co., Ltd.	27-11, Sendagaya 5-chome, Shibuya-ku, Tokyo 151-0051, Japan	Research	March 25, 1986	300 100.00
Norinchukin Facilities Co., Ltd.	2-24, Toyosu 3-chome, Koto-ku, Tokyo 135-0061, Japan	Building Management & Facility Management	August 6, 1956	100 100.00
Nochu Business Support Co., Ltd.	2-1, Otemachi 1-chome, Chiyoda-ku, Tokyo 100-8155, Japan	Provider of administrative services for The Norinchukin Bank	August 18, 1998	100 100.00
Norinchukin Business Assist Co., Ltd.	3-1, Otemachi 1-chome, Chiyoda-ku, Tokyo 100-6828, Japan	Provider of administrative services for The Norinchukin Bank	December 1, 2016	30 100.00 (20.00) <sup>Note</sup>
Norinchukin Academy Co., Ltd.	27-11, Sendagaya 5-chome, Shibuya-ku, Tokyo 151-0051, Japan	Training	May 25, 1981	20 100.00
Norinchukin Value Investments Co., Ltd.	2-3, Uchisaiwaicho 2-chome, Chiyoda-ku, Tokyo 100-0011, Japan	Investment Management Services & Investment Advisory Services	October 2, 2014	444 92.50 (27.75) <sup>Note</sup>
Kyodo Housing Loan Co., Ltd.	27-11, Sendagaya 5-chome, Shibuya-ku, Tokyo 151-0051, Japan	Mortgage Loans & Housing Loan Guarantee	August 10, 1979	10,500 92.12
Nochu Information System Co., Ltd.	2-3, Toyosu 3-chome, Koto-ku, Tokyo 135-0061, Japan	System Development & Maintenance	May 29, 1981	100 90.00
JA Card Co., Ltd.	14-1, Sotokanda 4-chome, Chiyoda-ku, Tokyo 101-0021, Japan	Planning and promotion, such as JA card business	October 2, 2017	100 51.00
Norinchukin Zenkyoren Asset Management Co., Ltd.	6-5, Kudanminami 1-chome, Chiyoda-ku, Tokyo 102-0074, Japan	Asset Management & Investment Advice	September 28, 1993	1,466 66.66
Norinchukin Capital Co., Ltd.	3-1, Otemachi 1-chome, Chiyoda-ku, Tokyo 100-0004, Japan	Private Equity Investments & Fund Management	August 10, 2021	100 100.00
Nochu-JAML Investment Advisors Co., Ltd.	9-2, Kandaogawamachi 3-chome, Chiyoda-ku, Tokyo 101-0052, Japan	Real Estate Asset Management	September 15, 2021	100 70.00
The Cooperative Servicing Co., Ltd.	23-14, Higashiikebukuro 3-chome, Toshima-ku, Tokyo 170-0013, Japan	Management and Collection of Non-Performing Loans	April 11, 2001	500 37.96
JA MITSUI LEASING, LTD.	13-1, Ginza 8-chome, Chuo-ku, Tokyo 104-0061, Japan	Leasing Business	April 1, 2008	32,000 33.40
Ant Capital Partners Co., Ltd.	4-1, Marunouchi 2-chome, Chiyoda-ku, Tokyo 100-6390, Japan	Private Equity Investments & Fund Management	October 23, 2000	100 24.95
Gulf Japan Food Fund GP	PO Box 309, Uglan House, Grand Cayman, KY1-1104, Cayman Islands	Investments	July 29, 2015	\$50,000 20.10
The Agribusiness Investment & Consultation Co., Ltd.	3-1, Otemachi 1-chome, Chiyoda-ku, Tokyo 100-6828, Japan	Investment in Agricultural Corporations	October 24, 2002	6,070 38.10
BOT Lease Co., Ltd.	27-1, Shinkawa, 2-chome, Chuo-ku, Tokyo 104-8263, Japan	Leasing Business	October 6, 1979	20,050 25.00
Norinchukin Hong Kong Limited	34th Floor, Edinburgh Tower, The Landmark, 15 Queen's Road, Central, Hong Kong, People's Republic of China	Provider of export support, market research, and investment and loan intermediary services mainly in Hong Kong, Macau and Guangdong Province, China	February 7, 2023	HK\$3.4 million 100.00

Note: The percentage of share units indirectly owned by The Norinchukin Bank.

# Global Network (As of April 1, 2023)

## Overseas Branches

### New York Branch

21st Floor, 245 Park Avenue,  
New York, NY 10167-0104, U.S.A.  
Telephone: 1-212-697-1717  
Fax: 1-212-697-5754  
SWIFT: NOCUUS 33

### London Branch

4th Floor, 155 Bishopsgate,  
London EC2M 3YX, U.K.  
Telephone: 44-20-7588-6589  
Fax: 44-20-7588-6585  
SWIFT: NOCUGB2L  
Company number: BR001902

### Singapore Branch

12 Marina Boulevard, #38-01/02,  
Marina Bay Financial Centre  
Tower 3, Singapore 018982  
Telephone: 65-6535-1011  
Fax: 65-6535-2883  
SWIFT: NOCUSGSG

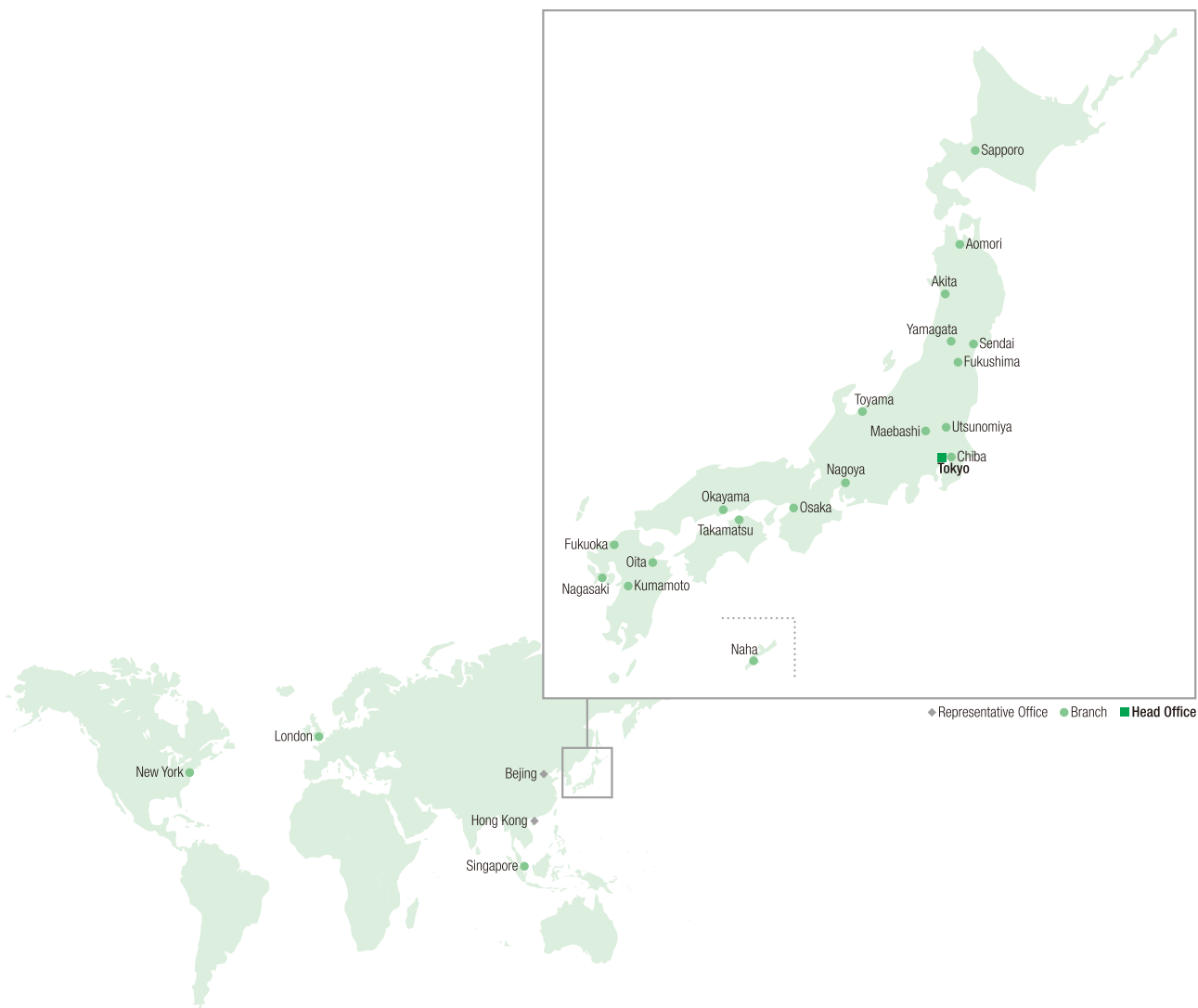
## Overseas Representative Offices

### Hong Kong (China) Representative Office

34th Floor, Edinburgh Tower,  
The Landmark, 15 Queen's Road,  
Central, Hong Kong, China  
Telephone: 852-2868-2839  
Fax: 852-2918-4430

### Beijing Representative Office

Room 601, Chang Fu Gong Building,  
Jia-26, Jianguo Men Wai St.,  
Beijing, China 100022  
Telephone: 86-10-6513-0858  
Fax: 86-10-6513-0859



◆ Representative Office ● Branch ■ Head Office