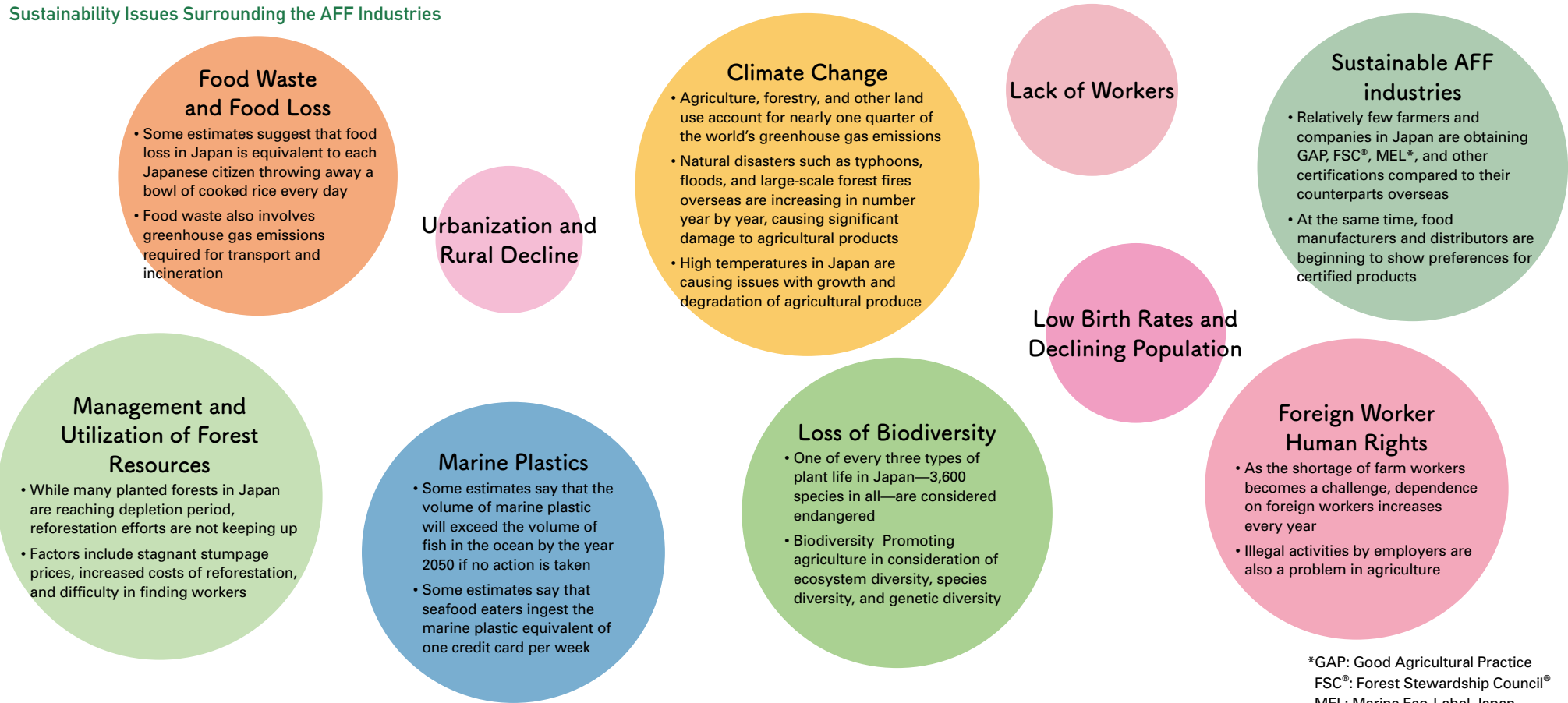


Sustainability Issues Surrounding the AFF Industries

Sustainability issues in the AFF industries become more grave with each passing year. The Norinchukin Bank recognizes that these issues go to the foundation of our businesses.

Sustainability Issues Surrounding the AFF Industries



*GAP: Good Agricultural Practice
 FSC®: Forest Stewardship Council®
 MEL: Marine Eco-Label Japan

Sustainability issues in the AFF industries are nothing less than the very foundation of the Norinchukin Bank business

↓

We will contribute to solutions through our businesses